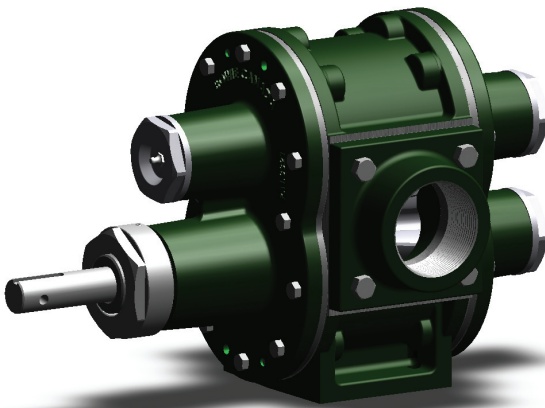




## 600 Series

The newest addition to the Bowie product line, the 600 Series is a high performance pump for use in the most severe of applications or in situations where extended service intervals are required. The design incorporates exclusive seal chambers working in conjunction with double inboard ball/roller bearings to isolate the pumped product. The end result is exceptional performance combined with the ultimate in leak-free protection.



The pump solution that **saves you time**,  
can make you **more money**  
and is of course, **leak proof**.

### MAIN LOCATION

9333 - 41 Avenue NW  
Edmonton, AB T6E 6R5  
Ph. (780) 465-7812  
Fx. (780) 469-2587

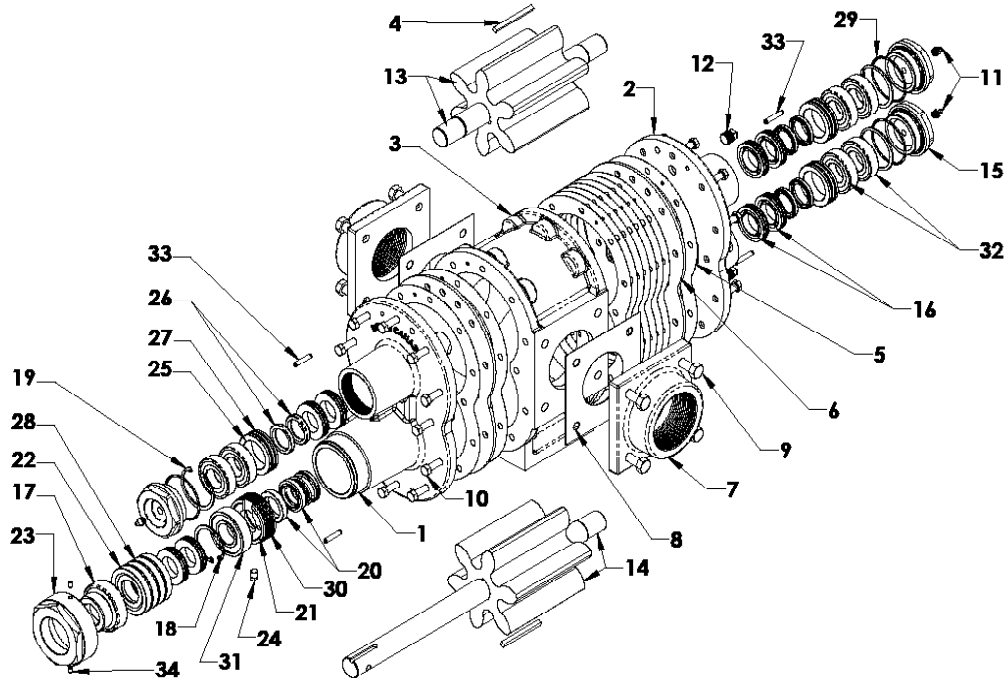
**1.877.TOBOWIE**

### BRANCH LOCATION

#34, 147 Citation Drive  
Vaughan, ON L4K 2P8  
Ph. (905) 760-0174  
Fx. (905) 760-0171

**[www.bowiepumps.com](http://www.bowiepumps.com)**

# 600 Series



Ref #	Part #	Description	Qty
1	621	Front Plate	1
2	622	Back Plate	1
3	303	Center Case	1
4	304K	1/4" Key	2
5	306	Pump Gasket	10
6	307HPB	Hardened Wear Plate	2
7	310	Adapter Flange	2
8	311	Flange Gasket	2
9	312	Flange Bolt	8
10	314	Plate Bolt	24
11	316	1/8" Grease Fitting	3
12	318	3/8" Drain Plug	2
13	601	Buna-N Gear Idler	1
13	601HC	Helical Steel Gear/Idler	1
13	601HDD	Helical Delrin®/Idler	1
14	602	Buna-N Gear Drive	1
14	602HC	Helical Steel Gear Drive	1
14	602HD	Helical Delrin®/Drive	1
15	608	Bearing Plug	3
16	623V	Teflon Seal c/w O-ring	8
17	626	Drive Locking Bearing	1
18	628	Lock Ring Drive	1
19	632	Lock Ring	3
20	636V	Viton Mechanical Seal	1
21	638	Saddle	1
22	641	Drive Seal Housing	1
23	643	Bearing Nut	1
24	645V	Inspection Plug	1
25	644	Seal Casing	3
26	645V	Viton Double Lip Seal	6
27	646	Viton O-ring (Seal Casing)	6
28	647	Viton O-ring (Seal Housing)	3
29	648	Viton O-ring (End Plug)	3
30	649	Viton O-ring (Saddle)	2
31	650	Inner Drive Bearing	1
32	651	Small Bearing	6
32	4565	Small Ball/Roller Bearing	3 + 3
33	652	Dowel Pin	4
34	653	Set Screw	3
35	23600	Seal & Bearing Kit - 2" & 3" Rubber Pumps	1
36	3S4600	Seal & Bearing Kit/ 3" Steel Pump & 4" Pumps	1