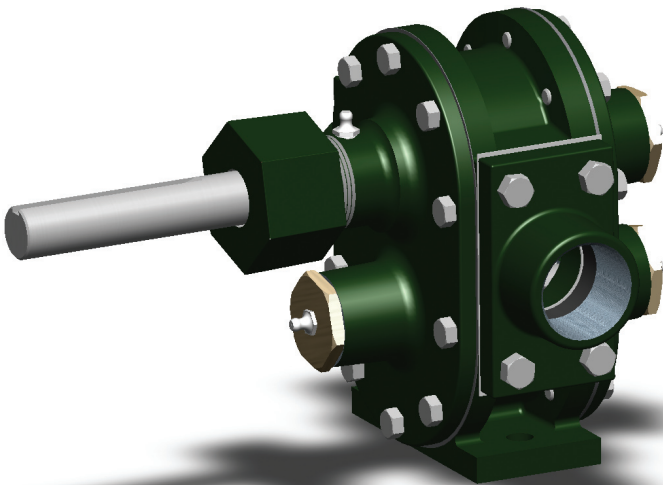




9100 Series

One of Bowie Pumps' signature series pumps, the 9100 Series - best known as the Baby Bowie - is an ideal pumping solution when space is limited. Engineered to provide Bowie power in a smaller package, the 9100 Series is suitable for pumping chemicals and liquids of various viscosities in any of Canada's tough climates.



MAIN LOCATION

9333 - 41 Avenue NW
Edmonton, AB T6E 6R5
Ph. (780) 465-7812
Fx. (780) 469-2587

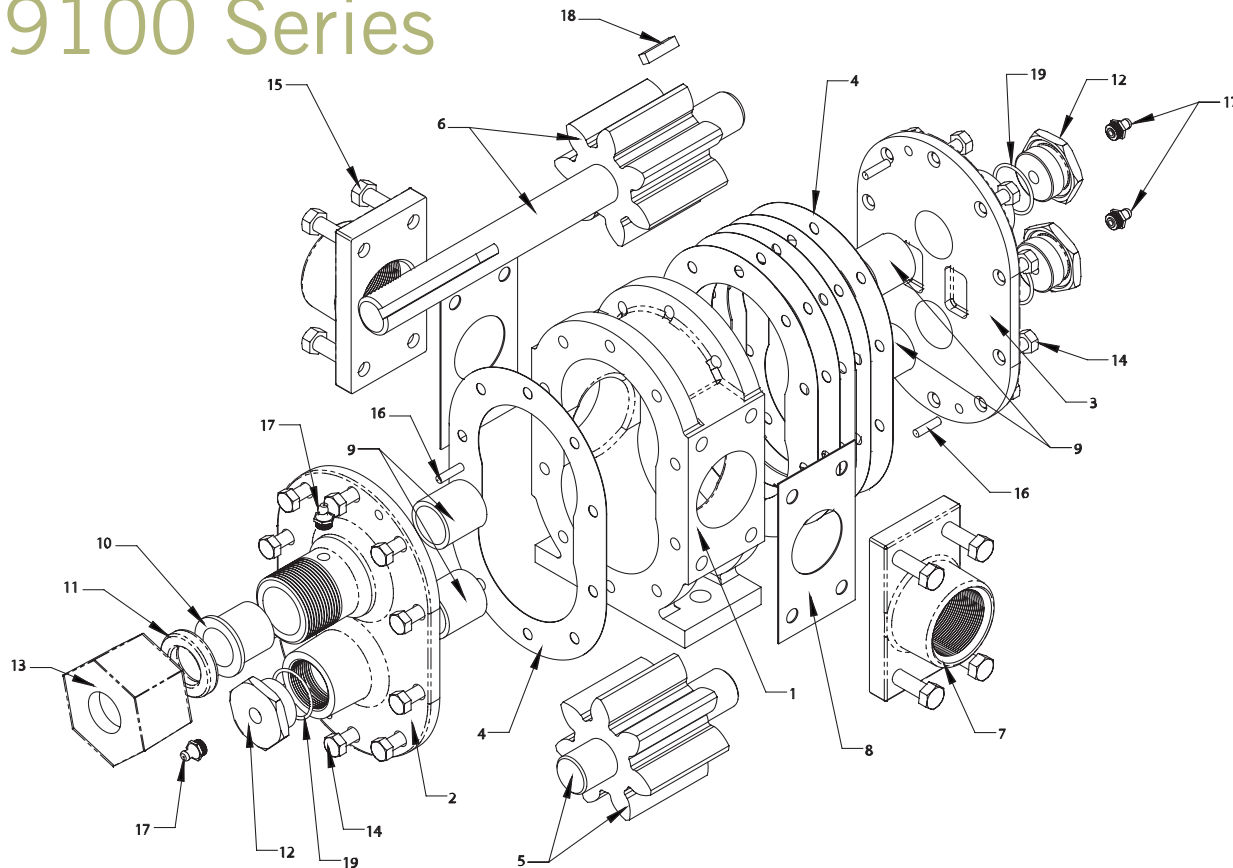
1.877.TOBOWIE

BRANCH LOCATION

#34, 147 Citation Drive
Vaughan, ON L4K 2P8
Ph. (905) 760-0174
Fx. (905) 760-0171

www.bowiepumps.com

9100 Series



Ref #	Part #	Description	Qty
1	103	Centre Case	1
2	9102BB	Front Plate (c/w Bushing)	1
3	9107BB	Back Plate (c/w Bushing)	1
4	9106	Pump Gasket	7
5	9104	Nitrile Gear-Idler	1
6	9105	Nitrile Gear-Drive	1
7	9110F	Adapter Flange (1 1/2" or 2")	2
8	9111	Adapter Flange Gasket	2
9	9109B	Bronze Bushing	4
10	9110	Packing Gland Insert	1
11	9113T	Teflon Packing	1
12	9108B	End Plug	3
13	9101	Packing Nut	1
14	114	End Plate Bolts	20
15	*	Adapter Flange Bolts	8
16	315	Taper Pin	4
17	9116	Grease Fitting	4
18	104K	Gear Key	1
19	9127	O Ring	3