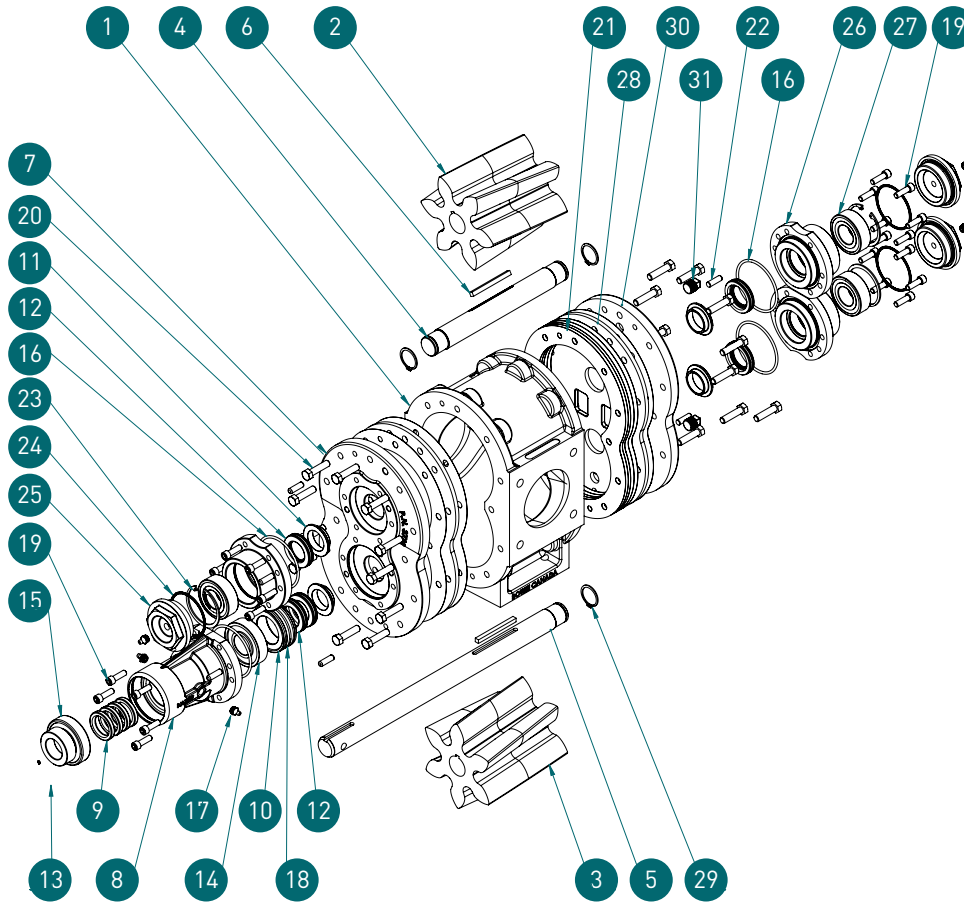


DURA-SEAL® SERIES 700 (2" AND 3")



Ref #	Part Number	Description	Qty
1	● 303	Centre Case	1
2	● 304EDHCG	Helical Steel Idler Gear Only	1
3	● 305EDHCG	Helical Steel Drive Gear Only	1
2,3	● 304GED	Buna-N Nitrile Gear Only	2
4	● 701SA	Nitrided Idler Shaft	1
5	● 702SA	Nitrided Drive Shaft	1
6	3304K	Gear Key	2
7	3721	Front Plate	1
8	3727	Drive End Cap	1
9	3645V	Viton Lip Seal	4
10	3716	Drive Seal Housing	1
11	3713	Bronze Bushing	4
12	3325V1.25	Viton Lip Seal	5
13	3428	Drive End Cap Locking Ring	1
14	3650	Inner Drive Bearing	1
15	3626	Drive Locking Bearing	1
16	3730	End Cap Viton O-Ring	4

Ref #	Part Number	Description	Qty
17	3316	1/8" Grease Fitting	5
18	3724	Seal Housing Viton O-Ring	3
19	3729	5/16" Socket Head Bolt	24
20	3314XL	3/8" Hex Bolt	24
21	3306	Pump Gasket	10
22	3315H	5/16" Dowel Pin	12
23	3632	Snap Ring for Small End Cap	3
24	3648	End Plug Viton O-Ring	3
25	3608	Bronze Threaded End Plug	3
26	3734S	Small End Cap	3
27	4751	Roller Bearing	3
28	3307HWP	Hardened Wear Plate	2
29	3725	Snap Ring for Shaft	3
30	3722	Back Plate	1
31	3318	Drain Plug	2
	SB700S	Dura-Seal Series Seal and Bearing Kit	1

● Any 3 digit part numbers need to have the port size of the pump (2", 3") added to the front of the part number. (i.e. part number is 3303 for centre case for 3" pump)