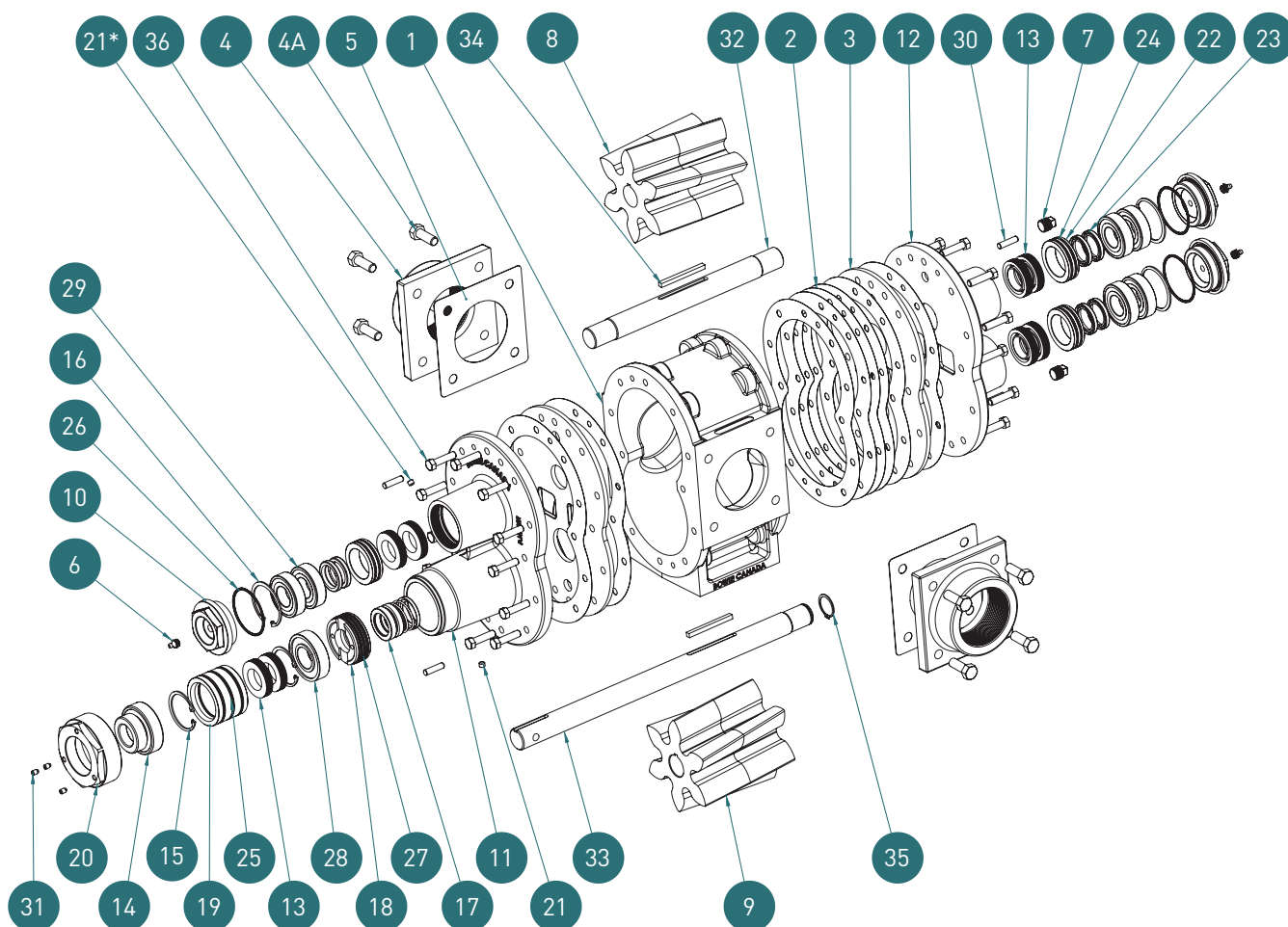


ULTRA-SEAL® SERIES 600 (2", 3" AND 4")



Ref #	Part Number	Description	Qty
1	● 303	Centre Case	1
2	3306	Pump Gasket (Steel Gears or Buna Gears)	8 or 11
3	3307HPB	Hardened Wear Plate	2
4	● 310	Adaptor Flange	2
4A	346FBK	Adaptor Flange Bolt Kit	1
5	● 311	Adaptor Flange Gasket	2
6	3316	Grease Fitting	3
7	3318	Drain Plug	2
8	● 304EDHCG	Helical Steel Idler Gear	1
	● 304GED	Buna-N Nitrile Gear	1
9	● 305EDHCG	Helical Steel Drive Gear	1
	● 304GED	Buna-N Nitrile Gear	1
10	3608	Bronze Threaded Plug	3
11	3621	Front Plate	1
12	3622	Back Plate	1
13	3623V	Teflon Seals w/ O-Rings	8
14	3626	Drive Locking Bearing	1
15	3628	Snap Ring Drive	2
16	3632	Snap Ring	3
17	3636SC	Silicone Carbide Mechanical Seal	1
18	3638	Mechanical Seal Saddle	1
19	3639	Drive Seal Housing	1
20	3641	Bearing Nut	1
21 21*	3643	Inspection Plug [*Drive-On-Top application Only]	1
22	3644	Seal Housing	3
23	3645V	Viton Lip Seal	6

Ref #	Part Number	Description	Qty
24	3646	Viton O-Ring	6
25	3647	Viton O-Ring	3
26	3648	Viton O-Ring	3
27	3649	Viton O-Ring	3
28	3650	Inner Drive Bearing	1
	4654	Roller Bearing	See Note
29	3651	Ball Bearing	See Note
	3653	Set Screw	3
30	3315H	Dowel Pin	4
31	3653	Set Screw	3
32	● 601A	Idler Shaft	1
33	● 602A	Drive Shaft	1
34	● 304K	Key	2
35	3725	Snap Ring for Shaft	1
36	3314XL	End Plate Bolt	24
	23600	Seal & Bearing Kit for 3" Rubber Gear and all 2" Pumps	
	3S4600	Seal & Bearing Kit for 3" Steel Gear and all 4" Pumps	

Roller Bearing and Ball Bearing Quantities				
29	Part Number	Pump Port Size	Steel Gears	Rubber Gears
		4654 Quantities	2"	0
		3"	3	0
		4"	3	3
29	3651 Quantities	Pump Port Size	Steel Gears	Rubber Gears
		2"	6	6
		3"	3	6
		4"	3	3

● Any 3 digit part numbers need to have the port size of the pump (2", 3" or 4") added to the front of the part number.
(i.e. part number is 3303 for Centre Case for 3" pump)